

AUTHORITY FOR EXPENDITURE

4

Form (Revised) 1904

Application dated December 5th 1904 Comptroller's No. 12

From Seattle Division Operating Department.

For Kirkland: - 350 foot spur.

Amount, \$ 491.00

REMARKS AND RECOMMENDATIONS.

No engineering objections. Work to be done by division forces under supervision of Division Superintendent.

[Signature of Chief Engineer]

Chief Engineer

[Signature of Second Vice President]

[Signature of Second Vice President]

Second Vice President.

At present no facilities for loading at Kirkland. Letter and attached file from the Kirkland Development Co., under date of October 29th, states fully conditions existing at Kirkland and necessity for loading track facilities. Construction of track has been recommended by all western officials, including Mr. Levey.

[Signature of General Manager]

General Manager.

7/2/05

DISTRIBUTION OF CHARGES.

Operating Expenses \$

Materials for additions \$ 491.00

Total \$

[Signature of Comptroller]

Comptroller.

NORTHERN PACIFIC RY. CO. RECEIVED FEB 11 1905 OFFICE AUDR. DISK.

INSTRUCTIONS AND APPROVAL.

Approved February 9 1905 190

[Signature]

[Signature of President]

President.

COMPTROLLER'S RECORD OF NOTICE OF APPROVAL AND OF COMPLETION.

Form 1345 issued FEB 15 1905 190

Work commenced 190 Work completed 190

ESTIMATE OF COST OF PROPOSED IMPROVEMENT ON BELT LINE AT KIRKLAND.

		LABOR	MATERIAL	TOTAL
1.3 tons 3d class 60% steel	@ \$20.00		\$26.00	\$26.00
8.3 tons 3d class 50% steel	@ 10.00		108.00	108.00
45 angle bars	@ .35		16.10	16.10
92 track bolts	@ .021		1.93	1.93
2 kegs track spikes	@ 3.45		6.90	6.90
1 set switch ties	@		23.25	23.25
134 cross ties	@ .23		30.82	30.82
1 60% split switch			28.50	28.50
1 60% frog No. 7			23.00	23.00
1 H. T. switch stand			11.25	11.25
1 connecting rod			2.50	2.50
15 rail braces	@ .10		1.50	1.50
Freight on rail			30.00	30.00
Freight on ties			13.00	13.00
Grading 400 yds.	@ .20	\$80.00		80.00
Putting in one split switch		18.00		18.00
Laying and surfacing 350' track	@ .10	35.00		35.00
Engineering and Incidentals 10% of labor		<u>13.30</u>		<u>13.30</u>
		\$146.00	\$343.00	\$491.00

Office of the Division Engineer.

Tacoma, Wash., December 13, 1904

W. H. Cronell
Division Engineer

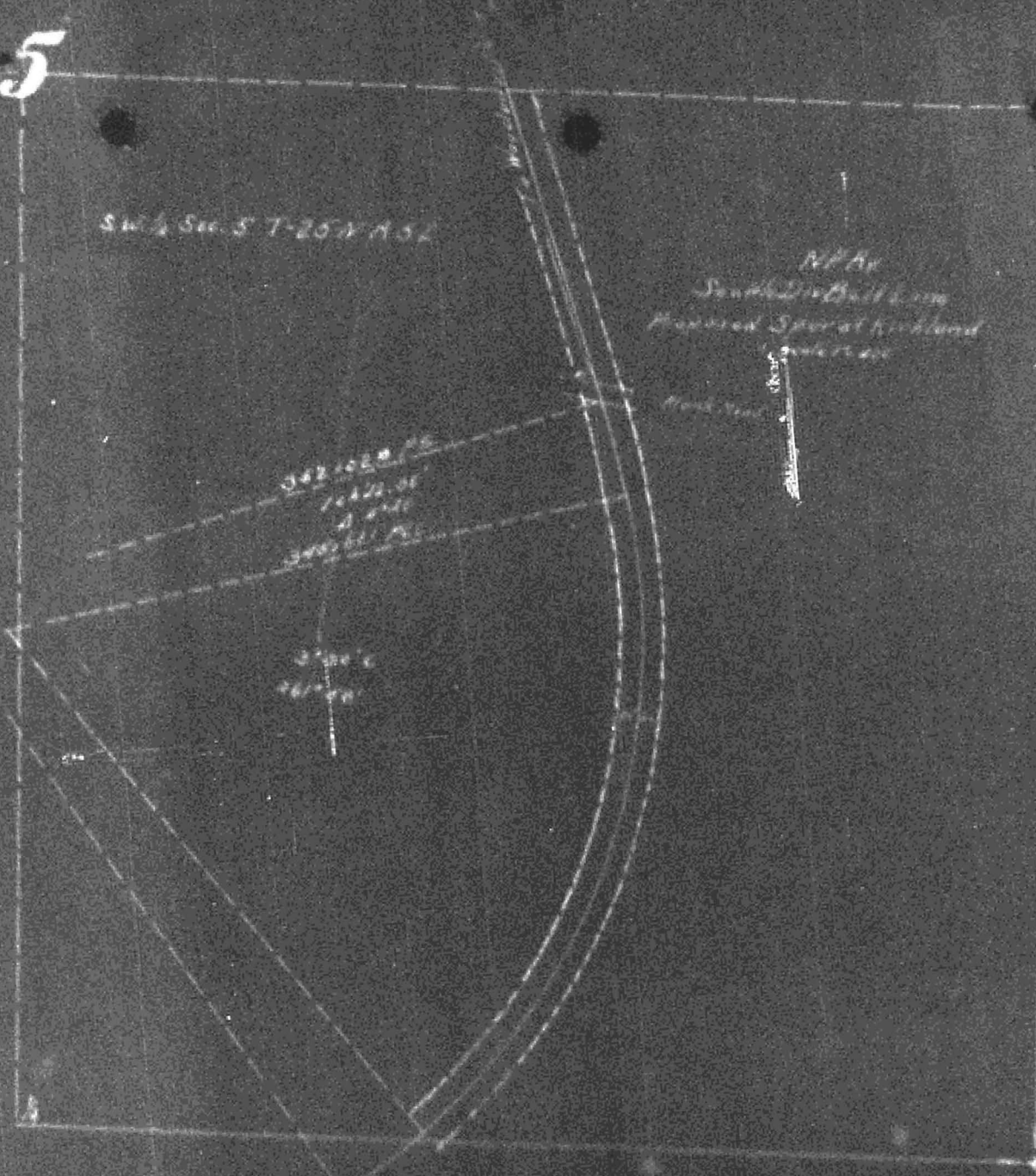
5

SW 1/4 Sec. 5 T-20N R-5E

NPA
South Dakota
Map of State of South Dakota

342 102.0 AC
7042.0 AC
4 000
3400 11.0 AC

3 000
7042.0



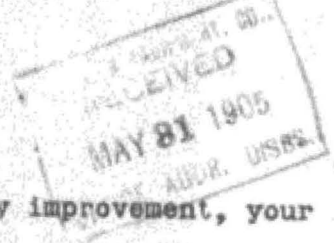
NORTHERN PACIFIC RAILWAY COMPANY.

S E A T T L E D I V I S I O N

H. A. Gray,
Comptroller,

St. Paul, Minn.

Seattle, Wash. May, 26, 1905. 190



Dear Sir:-

I beg to advise you that work authorized by improvement, your No. 42 covering Kirkland, Spur.

was completed April, 1905.

190 My record shows cost

as follows:

Material,	\$ 303.05
Labor,	\$ 138.00
Engineering,	\$
Contract work,	\$
Total,	\$ 441.05

Yours truly,

[Handwritten Signature]
Superintendent.

REMARKS:

D.S.K. will have a credit of \$2.07 to this improvement in May acc'ts.